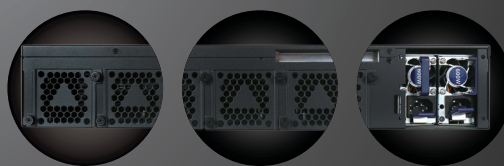


# CAR-5040

Intel® Grantley Haswell-EP Platform, Maximum support up to 56 GbE Ports



## Feature

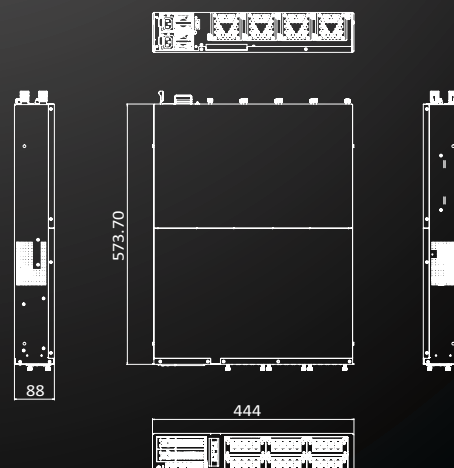
- Intel® Grantley Haswell-EP platform
- 16x DDR4 ECC DIMMs up to 2133MHz
- Up to 6 front-access NIC module supported
- Up to 3 Tiler 36 cores network module supported.
- CRPS PSU, Smart LEDs, N+1 Fans solution, IPMI, System thermal integrate solution.

## SPECIFICATION

CPU Board	Intel® Haswell-EP
PCH/Chipset	Intel® Wellsburg PCH
System Memory	16 DDR4 ECC DIMMs up to 2133MHz
Ethernet Port	Up to 56 GbE RJ45/SFP
Bypass	Based on CASwell NIC Module or Standard add-on card
Expansion	Up to 6 PCIe x8 Gen3 for CASwell NIC Module Up to 3 PCIe x4/ x8 Gen 3 Standard add-on card
Storage Device	8x 2.5" Swappable SATA/SAS HDDs CF Socket
Dimension	444(W) x 574(D) x 88(H)mm 17.48"(W) x 22.6"(D) x 3.46"(H)
Power	550W CRPS Redundant PSU

## FRONT PANEL

Serial Port	Front-access RJ45 system console 2x5 pin-header
LCD Panel	2x16 Characters 128x32/64 Graphic
LED	PSU1/PSU2/FAN/Power/ HDD/ Ethernet
USB	Dual USB 2.0
VGA	Optional from LOM or VGA module
LOM	IPMI 2.0 w/ GbE speed



## OPERATION

Operating Environment	Temp: 0 to 40°C (32 to 104°F) 20 to 90%RH
Storage Environment	Temp: -10 to 70°C (14 to 158°F) 5 to 95%RH @ 55°C
Certification	CE/FCC/UL
OS Support	Linux Kernel