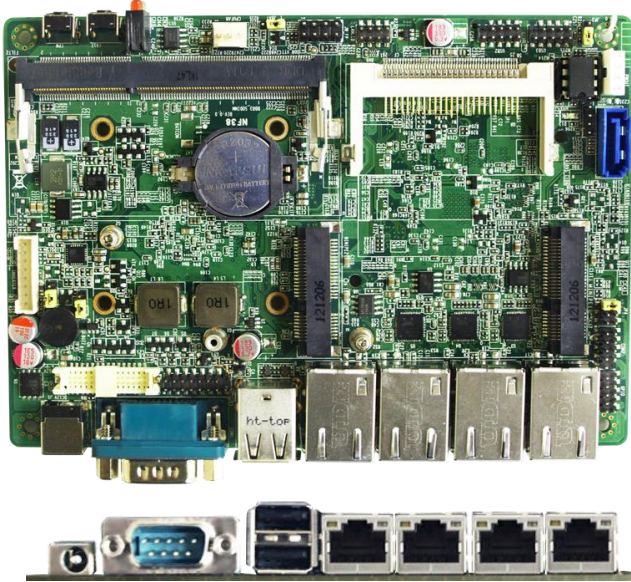


NF38-525

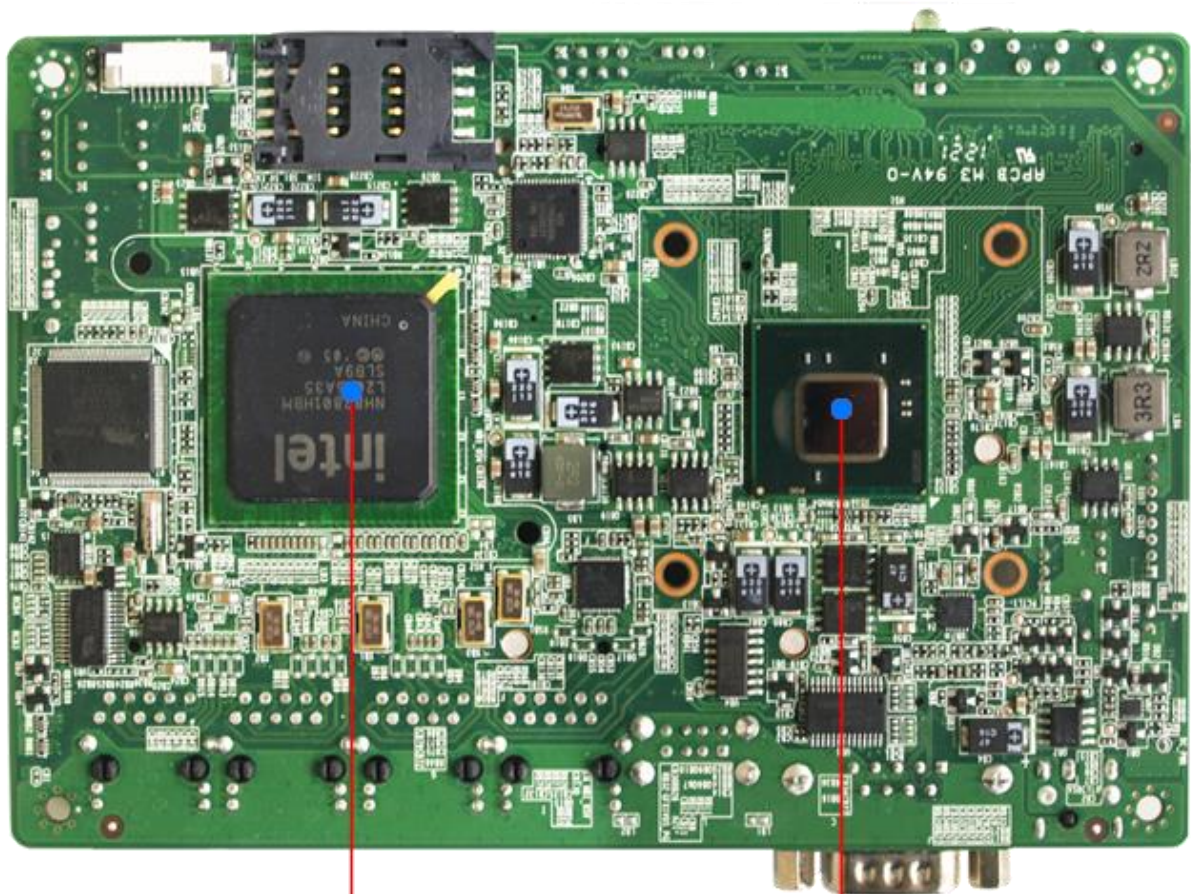
Intel Atom 3.5" SBC Network Appliance
4Giga LAN/CF-SATA/mSATA/SIM/12V



Features

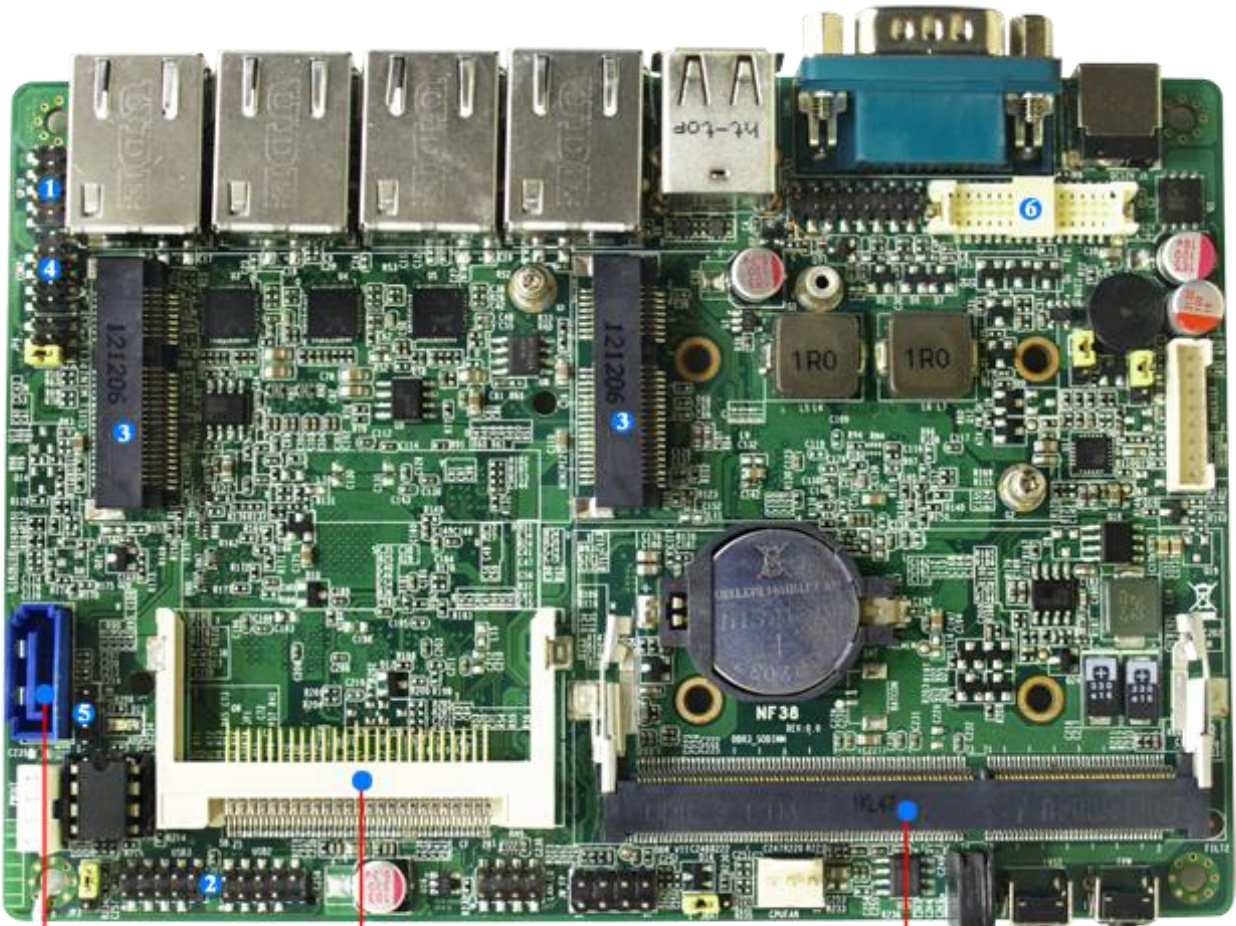
1. Embedded Long-life Design for Custom Network Appliance
2. Intel Atom D525 1.8GHz Dual-Core Processor, ICH8M Chipset
3. 4 * Realtek PCI Express Gigabit Ethernet Controllers
4. CompactFlash Slot supporting CF and CF-SATA Cards
5. 1 * SATA2 3Gb/s Ports, SIM Card Socket
6. 2 * PCI Express Mini Card Slots (One shared mSATA/mini-PCIE)
7. Supports 1 * DDR3-800 SO-DIMM up to 2GB
8. Internal VGA Header and 18-bit Single Channel LVDS
9. Watchdog Timer, 8-bit GPIO, Console Port
10. Onboard 12V DC Power
11. 3.5" SBC Form Factor (148mm x 102mm)

Note: Designed for OEM projects, does not include heatsink or thermal solution



INTEL® ICH8M Express chipset

INTEL® Pine Trail-D Processor D525



CF card reader socket
(can support both CF card & CF SATA card)

1 * DDR3 667/800MHz Single CH
SO-DIMM up to 2GB

1 * Serial ATAII 3Gb/s connector

- ❶ 1 * GPIO header
- ❷ 2 * USB 2.0 headers for 4 * USB 2.0 ports
- ❸ 2 * full size Mini PCI-E [1 * mSATA socket (Share with one of Mini PCI-E socket)]
- ❹ 1 * COM header (COM2 for RS232/422/485)
- ❺ 1 * CIR header
- ❻ 1 * 18-bits Single CH LVDS connector



Front I/O card with 2 * USB 2.0, Power & Reset button, Power & HDD LED & 4 * NIC LEDs

JNF38QLB-525 Specifications

Model No	■ NF38-525
Part No	■ JNF38QLB-525
CPU	■ Intel Atom D525 1.8GHz Dual-Core processor
Chipset	■ Intel ICH8M Chipset
Video	■ Integrated Intel GMA 3150 graphics
Memory	■ 1 * 204-pin DDR3-800 SO-DIMM up to 2GB
Expansion Slots	■ 2 * PCI Express Mini Card full-size (one is mSATA/mini-PCIE function selectable)
Storage	■ 1 * SATA2 3Gb/s port, 1 * CompactFlash Slot supporting either CF or CF-SATA ■ 1 * mSATA slot (mSATA/mini-PCIE function selectable)
Audio	■ None
Network	■ 4 * Realtek RTL8111E Gigabit LAN
LVDS	■ 18-bit Single Channel LVDS
Other Features	■ Support ACPI S3, CPU Smart FAN, Watchdog Timer 10-255 min/sec
Rear Panel I/O	■ 4 * RJ-45 Ports, 2 * USB 2.0 Ports ■ 1 * Console Serial Port (RS232) ■ 12V DC Jack
Internal I/O	■ 2 * USB Headers for 4 * USB 2.0 Ports ■ 1 * Serial Header (RS232/422/485) ■ 1 * 8bit GPIO, SIM Card Socket ■ 1 * VGA header, 18-bit Single Channel LVDS & Inverter ■ 4-pin Power output connector
BIOS	■ AMI EFI 8MB DIP Flash ROM
Box Contents	■ NF38 Motherboard, SATA Cable, Power Cable, Manual, DVD Driver Disk, Front I/O Board
Compliance	■ CE, FCC, RoHS, ErP
Temperature	■ Operating Temperature 0~60 °C, Storage Temperature -20-85 °C
Form Factor	■ 3.5" SBC Form Factor (148mm x 102mm)
Warranty	■ 2 Years Limited Warranty

*Specifications subject to change without notice, not responsible for typographical errors.



Jetway Computer Corporation
Phone: 510-857-0130 Fax: 510-857-0138
38507 Cherry St., Suite E, Newark, CA 94560
www.jetwaycomputer.com

