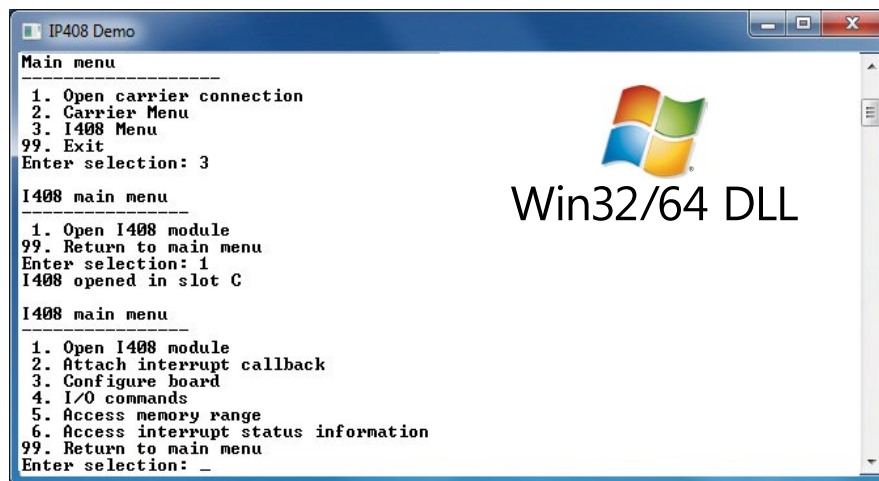
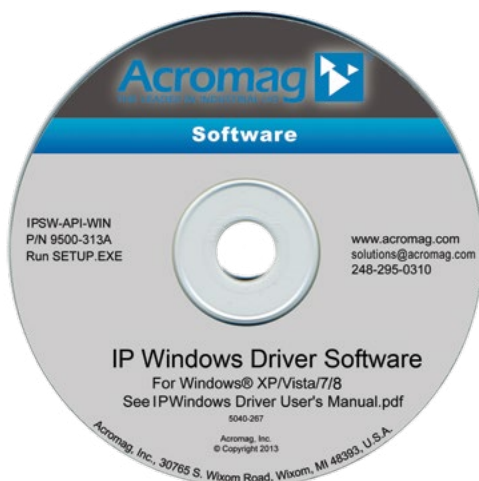


# Software Support

## IPSW-xxx-WIN Industry Pack Driver Software for Windows® Operating Systems



For Windows 8 / 7 / Vista ♦ Supports Acromag Industry Pack modules & Carriers ♦ Includes DLLs

### Description

#### Application Programming Interface

Acromag's software development tools greatly simplify the interface between the I/O boards and your Windows-based application program. These packages provide DLL driver level support for Acromag's line of Industry Pack products. In addition, "C" source demonstration programs provide easy-to-use tools to test the operation of the module.

#### Demonstration Programs

Powerful programs let you fully exercise your hardware before developing the actual application. These diagnostics will save you hours troubleshooting and debugging your applications. You can set addresses, set up registers, read real-world inputs, or drive outputs. The demonstration programs step you through the exact functions that are called in your application.



### Key Features & Benefits

- Easy installation procedure
- Documentation with step-by-step instructions
- Support for active Acromag Industry Pack I/O and Industry Pack FPGA modules and carriers
- Support for 32-bit and 64-bit systems
- Demonstration Programs
- Driver level support for desktop and embedded Windows level programming environments
- Compatible with Windows Embedded Standard applications
- Verifies operation of your I/O boards with a demonstration program to ensure proper hardware performance before attaching your application

### Ordering Information

#### ■ Software

For more information, see [www.acromag.com](http://www.acromag.com).

##### IPSW-API-WIN

32-bit and 64-bit Windows driver software package with DLLs and demonstration programs for Industry Pack products. Supports all active IP-based (Industry Pack modules, PCI carriers, & CompactPCI carriers) products. Supplied on CD-ROM.

##### IPSW-VME-WIN

32-bit and 64-bit Windows driver software package with DLLs and demonstration programs for Industry Pack products. Supports carrier models AVME9630, AVME9660, AVME9668, AVME9670 and all IP modules except IP5xx and XVME-6300 or XVME-6400 single board computers. Supplied on CD-ROM. (requires XVME board support package (BSP), sold separately)

*NOTE: For PMC, XMC, PCI, and cPCI modules and carrier cards support software, please refer to PCISW-API-WIN.*

### User-Friendly Licensing

Acromag's PCI Windows driver software is provided with a full site license. This allows anyone at your location to use this software without any additional charges. No run-time license is required.

You do not need to order additional software for different models within the family.



Tel 248-295-0310 ■ Fax 248-624-9234 ■ [solutions@acromag.com](mailto:solutions@acromag.com) ■ [www.acromag.com](http://www.acromag.com) ■ 30765 Wixom Rd, Wixom, MI 48393 USA