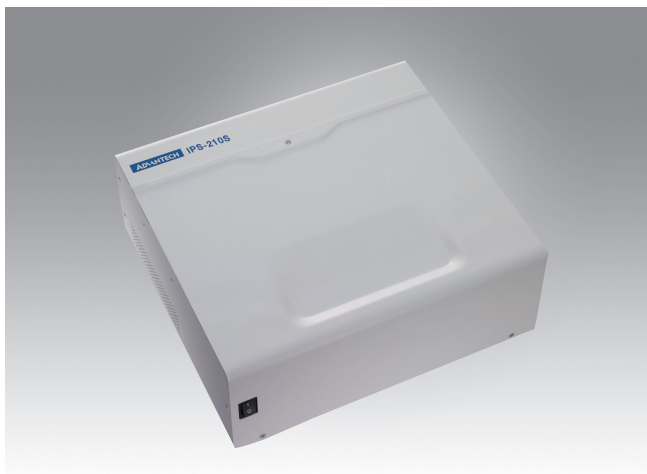


# iPS-M210S

## 210 Wh Industrial Power Storage System with Lithium-Iron Phosphate Cell



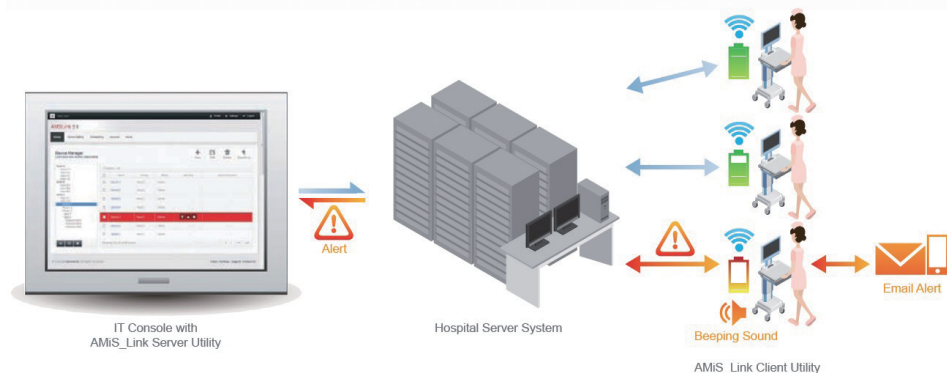
### Features

- Contains environmentally-friendly, long lifecycle rechargeable batteries
- 170W DC output for integration of various devices
- Fanless design for hospital environment
- Swappable battery pack design for quick and easy replacement
- 2 V<sub>DC</sub> output with simultaneous power support
- Safety protection prevents against over charge and discharge
- "AMiS\_Link" software solution for remote battery management

### Specifications

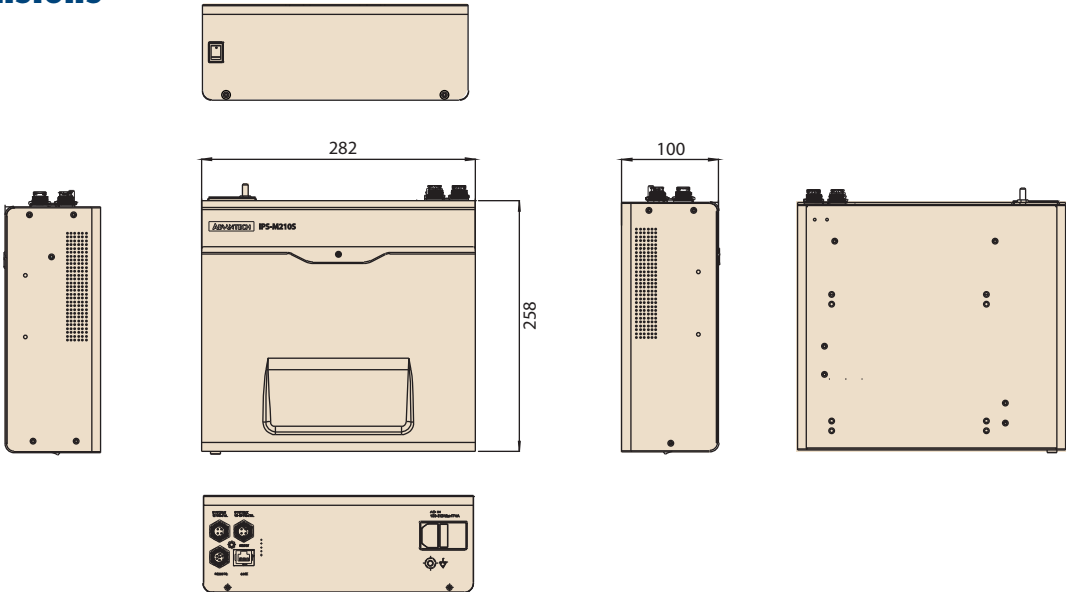
Power Supply	Battery Type	Lithium-Iron Phosphate (LFP)
	Battery Capacity	210 Wh
	Battery Lifespan	DOD 80%, 1000 cycles
	Charge Time	< 1.5 hr. DOD 100%
	Input Voltage	100 ~ 240 V <sub>AC</sub> , 50 ~ 60 Hz, Max 4.5 A
	DC Output Voltage	System 1: 19 V <sub>DC</sub> , Max. 6 A System 2: 12 V <sub>DC</sub> , Max. 5 A
	Charging Status Indicators	LEDs with continuous readout; intelligent software
I/O Ports	DC Output Interface	DC jack (4-pin locking mini-din connector)
	Communication Interface	RS-232
Environment	Vibration	5 ~ 500 Hz 1 G
	Operating Temperature	30° C
	Cooling System	Fanless
	Water Resistance	IP67 DC output connector
Physical Characteristics	Dimensions	282 x 258 x 100 mm (11.1" x 10.2" x 3.9")
	Weight	7 kg
Power Management Software	AMiS_Link	Battery capacity indicator Alerts (battery capacity, temperature, warning) Battery life cycle statistics Report & log file Client installation & server installation (Optional) Multi-language support, including Traditional Chinese, Simplified Chinese, English, German and Dutch
Certifications		CE, FCC Class B certified, CCC

### AMiS\_Link Software Solution for Remote Battery Management



Dimensions

Unit: mm Unit: mm



Ordering Information

Part Number	Cell Type	Battery Capacity	Lifecycle	Charge time	Weight	Remarks
iPS-M210-LFA-SE	LFP	210 Wh	DOD 80%, 1000 cycles	< 1.5 hr. DOD 100%	7 kg	
iPS-M210A-LFA-SE	LFP	210 Wh	DOD 80%, 1000 cycles	< 1.5 hr. DOD 100%	7 kg	For AMiS cart only

Rear I/O



1. System 2: 12 V<sub>DC</sub>, 5 A  
2. System 1: 19 V<sub>DC</sub>, 6 A  
3. 6-pin remote control connector  
4. RJ-45 (to RS-232) connector
5. AC In and AC On/Off switch  
100 ~ 240 V<sub>AC</sub> / F4A  
6. AC input switch  
7. Ground pole

Packing List (iPS-M210-LFA-SE)

Part Number	Part Description	Quantity
1700020364-01	4-pin to Ring Terminal cable	1
1700020371-01	4-pin to DC Jack cable	1
IPS-REMT-00-A0E	6-pin remote control cable	1
1700019500	RJ-45 to RS-232 console cable	1