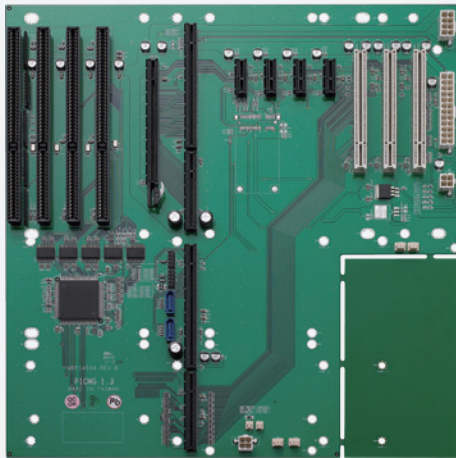


NBP 14534

14-slot Backplane for 4U Chassis with 1 SHB Slot,
4 x ISA, 3 x PCI, 4 x PCIe1



Main Features

- 4 ISA slots on PICMG 1.3 backplane
- Size : 317mm (W) x 328mm (L)
- Support ATX & BTX power supply

Specifications

System Architecture

- For 13-Slot chassis

Dimensions

- 317mm (W) x 328mm (L)

Slot

- PICMG1.3 (SBC Slot), Three PCI , Four ISA , Four PCIe1

Power Input

- 1 x 24pin power connector
- 1 x 8pin auxiliary power connector
- 1 x 4pin auxiliary power connector

Power Output

- 1 x 4pins 12V AUX power connector to SBC/SHB
- 1 x 4pins power connector for system fan

Environment

- Operating Temperature: 0°C~60°C (32°F~140°F)
- Storage Temperature: -20°C~60°C (-4°F~140°F)
- Operating Humidity: 10%~90% (Non-condensing)

Certifications

- CE approval
- FCC Class A

Ordering Information

- **NBP 14534 (P/N: 79N1453400X00) RoHS Compliant**
PICMG 1.3 13 Slot Backplane for 4U chassis w/ SBC slot, 4 PCIe slot
3 PCI slot, 4 ISA Slot, 1 Mini-PCIe (Reserved)

Dimension Drawing

