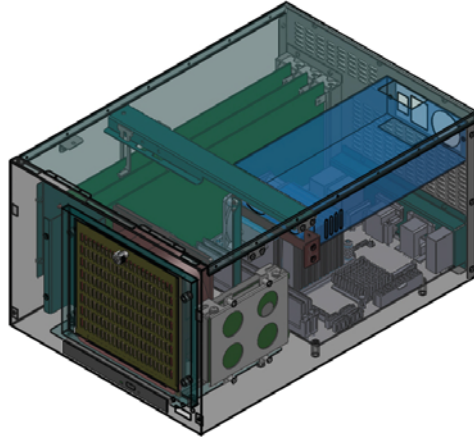


WEBS-8015S

Full size node chassis server with three expansion slots



The WEBS-8015S uses a Full Size Node chassis and is designed for industrial solutions. Optional two ISA slot for legacy support, RAID configuration through the SATA inter-

faces on the board. Applications will benefit from WEBS-8015S's compact size, expansion capability and RAID configuration.

FEATURES

- Intel® Core™ i3/i5/i7 processor in LGA-1150 Package
- Triple display (VGA / DP/ HDMI), Dual Gigabit Ethernet and Five RS232
- Intel® Q87 PCH
- PCI and ISA Slots
- on board GPIO 8bit Digital I/O
- Four USB 3.0 ports

System	
CPU	Intel™ i5/i7 processor in LGA-1150 package
Chipset	Intel® Q87 PCH
BIOS	Phoenix UEFI BIOS
System Memory	Support up to 8GB DDR3 1333/1600 SDRAM on two 240-pin
Storage	3 x 3.5" HDD/ 2.5" SSD
Expansion	PClex16, 2 x PClex4, (PClex1 Signal), Mini-PCIe PClex16, 2 x PCI, Mini-PCIe, (optional, by project) PClex16, 2 x ISA, Mini-PCIe, (optional, by project)
Watchdog Timer	Programmable via S/W from 1sec. to 255min.
H/W Status Monitor	Temperature (CPU and System), Voltage
Serial Port	1 x RS232/422/485, 5 x RS-232
Display	VGA/DP/HDMI Triple Display Support
USB	4 x USB 3.0 & 4 x USB 2.0
Ethernet	2 x Gigabit Ethernet
Serial Port	1 x RS232/422/485, 1 x RS-232

MECHANICAL & ENVIRONMENTAL

Operation Temperature	0-50°C
Storage Temperature	-20-80°C
Relative Humidity	5-95% non-condensing
Dimension	236 (W) x 340 (D) x 175 (H) mm
Weight	TBD

ORDERING GUIDE

■ WADE-8015S

Intel Core i3/i5/i7 based full size node chassis system



American Portwell

44200 Christy Street,
Fremont, CA 94538, USA
Tel: +1-510-403-3399
Fax: +1-510-403-3184
E-mail: info@portwell.com
http://www.portwell.com