

# Full-Size PCI Express Mini Modules

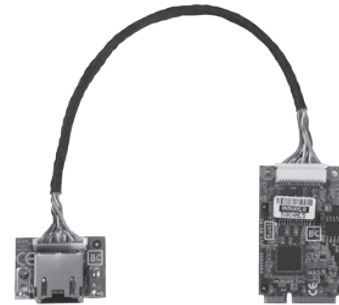
## AX92902

### Full-Size PCI Express Mini Module with Gigabit LAN

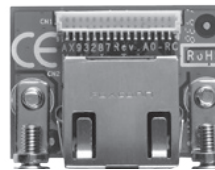
Features	<ul style="list-style-type: none"> <li>Supports 10/100/1000 Mbps transfer rates</li> <li>Supports Wake-on LAN</li> <li>Supports PXE Boot ROM</li> </ul>
From factor	Full-size PCI Express Mini Card
Controller	Intel® i210IT
Specification	1 Gigabit Ethernet
Dimension	51 x 30 mm

### Ordering Information

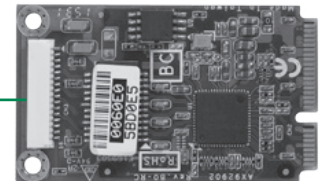
AX92902+AX93287	Full-size PCI Express Mini Module with Gigabit LAN (P/N: E392902101)
-----------------	---



▲ AX92902+AX93287



▲ AX93287



Gigabit LAN

▲ AX92902

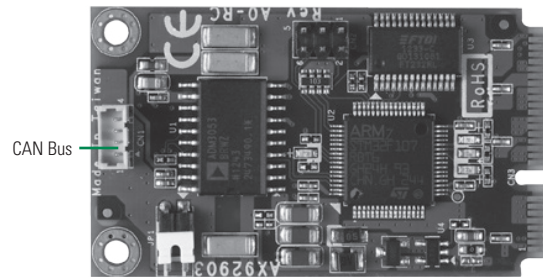
## AX92903

### Full-Size PCI Express Mini Module with CAN Bus

Features	<ul style="list-style-type: none"> <li>USB to 1 channel CANBus port</li> <li>Support CANOpen</li> </ul>
From factor	Full-size PCI Express Mini Card
Specification	CAN 2.0A and CAN 2.0B
Dimension	51 x 30 mm

### Ordering Information

AX92903	Full-size PCI Express Mini Module with CAN Bus (P/N: E392903100)
---------	---



CAN Bus

# Full-Size PCI Express Mini Modules

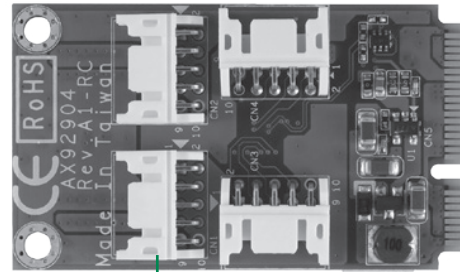
## AX92904

### Full-Size PCI Express Mini Module with 32 bit DIO

Features	<ul style="list-style-type: none"> <li>Supports four 8-bit TTL level DIO ports</li> <li>Each bit can be programmable as input or output</li> </ul>
From factor	Full-size PCI Express Mini Card
Specification	32 bit programmable DIO
Dimension	51 x 30 mm

### Ordering Information

AX92904	Full-size PCI Express Mini Module with 32 bit DIO
(P/N: E392904101)	



8 bit Digital I/O x 4

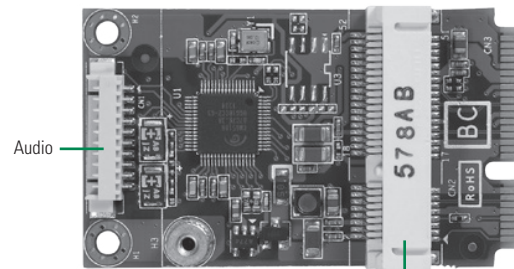
## AX92905

### Full-Size PCI Express Mini Module with Audio

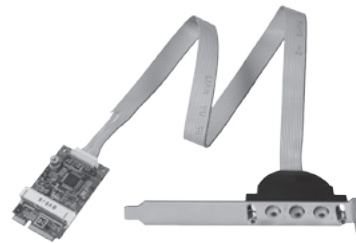
Features	<ul style="list-style-type: none"> <li>USB to Audio as Mic-In/Line-In/Line-Out</li> <li>Supports one half-size PCI Express Mini card slot with PCIe only</li> </ul>
From factor	Full-size PCI Express Mini Card
Specification	Cmedia CM6510B
Dimension	51 x 30 mm

### Ordering Information

AX92905	Full-size PCI Express Mini Module with Audio and Half-size PCI Express Mini Card (PCIe only)
(P/N: E392905100)	



Full-size PCI Express Mini Card (PCIe only)



▲ AX92905 with cable

SBC Services and Solutions

System on Modules

Embedded SBCs >EPIC

Embedded SBCs >3.5" Capa

Embedded SBCs >Nano-ITX

Embedded SBCs >Pico-ITX

Embedded SBCs >PC/104

Industrial Motherboards

Slot CPU Cards

ARM Embedded Boards

7 Accessories

Appendix



# Full-Size PCI Express Mini Modules

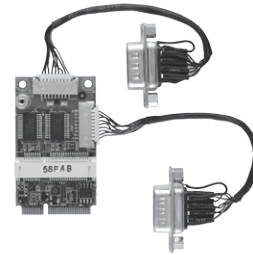
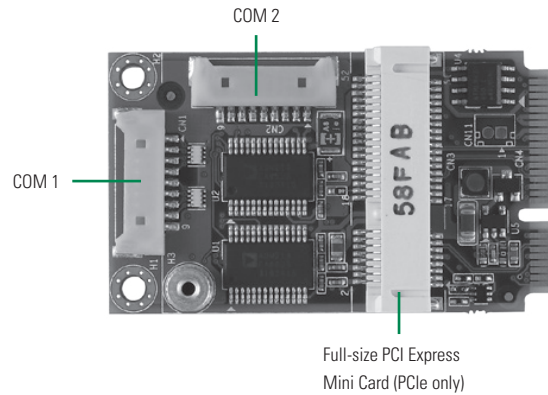
## AX92906

### Full-Size PCI Express Mini Module with COM

Features	<ul style="list-style-type: none"> <li>• USB to 2 Channel high speed RS-232 ports</li> <li>• Supports one half-size PCI Express Mini card with PCIe only</li> </ul>
From factor	Full-size PCI Express Mini Card
Specification	2 COM ports (2 x RS-232) and half-size PCI Express Mini Card slot (PCIe only)
Dimension	51 x 30 mm

### Ordering Information

AX92906 (P/N: E392906100)	Full-size PCI Express Mini Module with COM and Half-size PCI Express Mini Card (PCIe only)
------------------------------	--



▲ AX92906 with cable