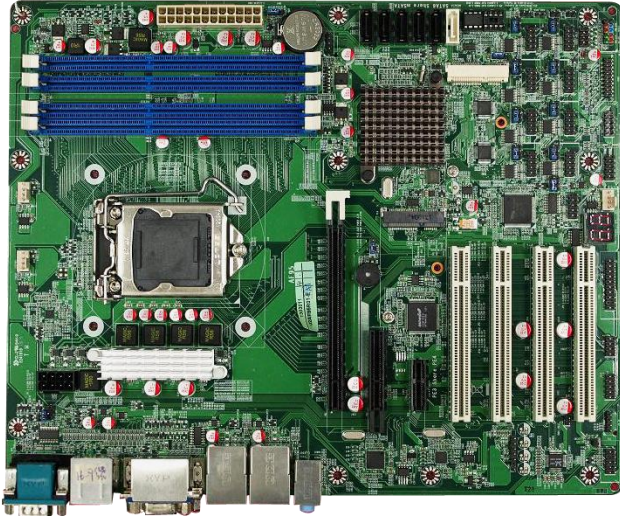


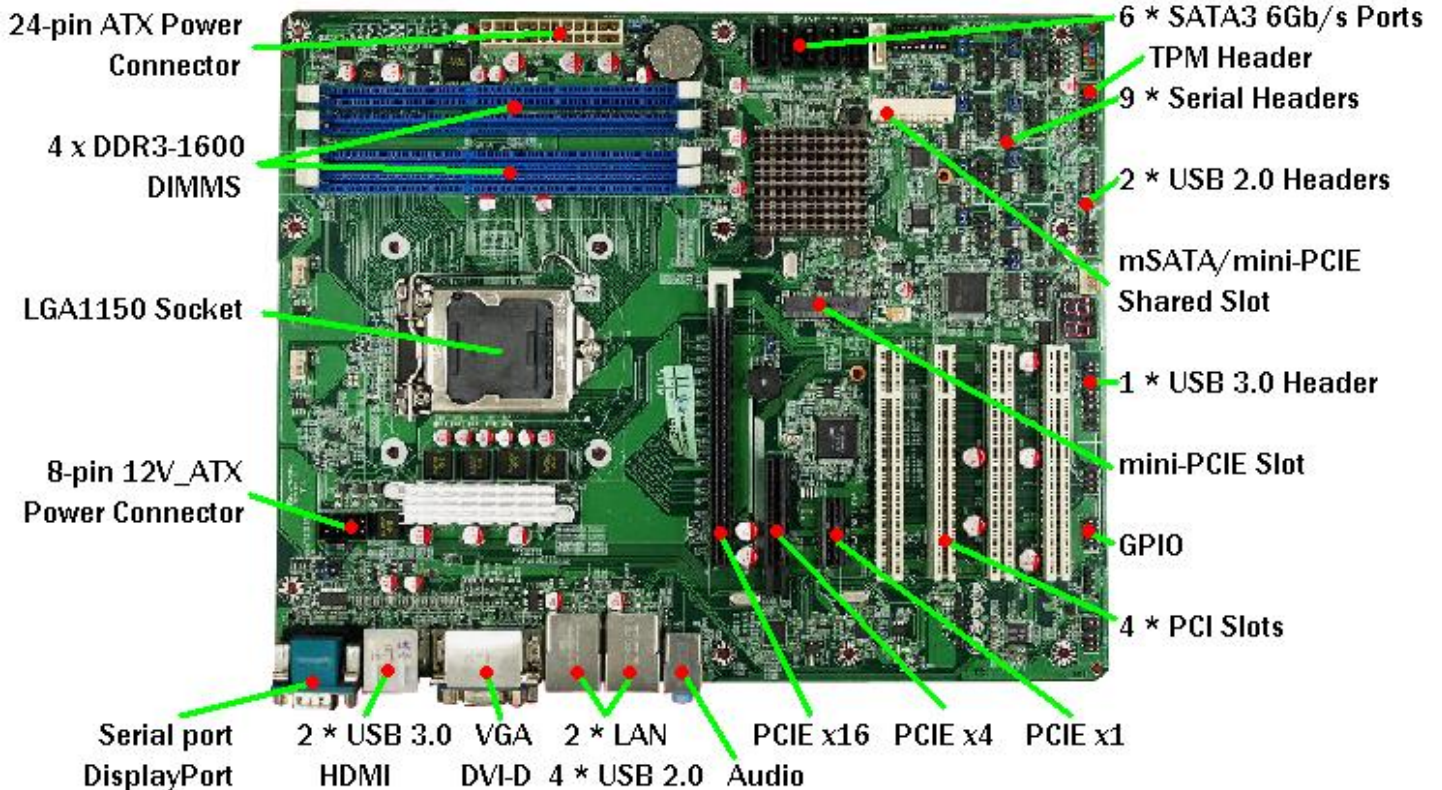
# NAF95-Q87

## ATX Industrial Motherboard LGA1150 (Haswell) 4th Gen Intel Core / Q87 / 2 GbE / 10 COM



### Features

1. Long-Life Embedded Class Industrial Motherboard with Planned Lifecycle Through Q4'2018
2. Socket LGA1150 Supporting 4th Generation Intel Core i3, i5, i7 Processors (Haswell), Intel Q87 Express Chipset
3. Intel HD 4000/5000 Graphics, DirectX 11.1, Supports up to Three Independent Displays, DisplayPort, HDMI, DVI, VGA
4. Supports DDR3-1600 DIMM up to 32GB Total
5. 6 \* SATA3 6Gb/s ports supporting RAID 0, 1, 5, 10, JBOD
6. 1 \* Shared mSATA/mini-PCIE Slot, 1 \* mini-PCIE slot
7. Dual Intel Gigabit LAN, Intel iAMT 9.0 Support
8. PCI Express 3.0 x16, PCI Express x4, PCI Express x1, 4 \* PCI
9. 10 \* Serial Ports, TPM 1.2 Header, Watchdog Timer
10. Compatible with Win XP, Win 7, Win 8, Linux
11. ATX Form Factor (305mm x 244mm)



<b>Model / Series</b>	■ NAF95
<b>Part No</b>	■ JNAF95-Q87
<b>Processor</b>	■ Socket LGA1150, Supports 4th Generation Intel Core i3, i5, i7 processors (Haswell)
<b>Chipset</b>	■ Intel Q87 Express Chipset
<b>Video</b>	■ Intel HD 4000/5000 Graphics in processor, DirectX 11.1, OpenGL 4.0
<b>Memory</b>	■ 4 * 240-pin DIMM slots supporting dual channel DDR3-1600 up to 32GB total
<b>Expansion Slots</b>	■ 1 * PCI Express 3.0 x16, 1 * PCI Express x4, 1 * PCI Express x1, 4 * PCI ■ 1 * PCI Express Mini Card slot (half-size)
<b>Storage</b>	■ 6 * SATA3 6Gb/s ports supporting RAID 0, 1, 5, 10 , JBOD ■ 1 * Shared mSATA/mini-PCIE slot (Full-size)
<b>Audio</b>	■ Realtek ALC662 5.1 Channel HD Audio
<b>Network</b>	■ 1 * Intel 82574L Gigabit LAN, 1 * Intel I217LM Gigabit LAN with iAMT 9.0 support
<b>Other Features</b>	■ Support ACPI S3, CPU Smart FAN, Watchdog Timer 10-255 min/sec
<b>Rear Panel I/O</b>	■ 2 * USB 3.0 Ports, 4 * USB 2.0 Ports ■ 2 * RJ-45 Ports ■ 1 * Serial RS232 Port ■ 1 * HDMI, 1 * DisplayPort, 1 * DVI-D, 1 * VGA ■ 3 * Audio Jacks (Line In, Line Out, Mic In)
<b>Internal I/O</b>	■ 1 * USB Header for 2 * USB 3.0 Ports ■ 2 * USB Headers for 4 * USB 2.0 Ports ■ CPU Fan connector, 2 * SYSFAN connectors ■ 1 * PS/2 Mouse/Keyboard connector ■ 9 * Serial port headers (8 * RS232, 1 * RS232/422/485) ■ 8-bit GPIO, TPM 1.2 Header, CIR Header, Chassis Intrusion Header ■ 24-pin ATX and 8-pin 12V_ATX Power connectors
<b>BIOS</b>	■ AMI UEFI 64MB DIP Flash ROM
<b>Box Contents</b>	■ NAF95 Motherboard, SATA Cables, COM Cables, Manual, DVD Driver Disk, I/O Shield
<b>Certification</b>	■ CE, FCC, RoHS, ErP
<b>Temperature</b>	■ Operating Temperature 0~60 ° C, Storage Temperature -20-85 ° C
<b>Form Factor</b>	■ ATX Form Factor (305mm x 244mm)
<b>Warranty</b>	■ 2 Years Limited Warranty

\*Specifications subject to change without notice, not responsible for typographical errors.



**Jetway Computer Corporation**  
**Phone: 510-857-0130 Fax: 510-857-0138**  
**38507 Cherry St., Suite E, Newark, CA 94560**  
**www.jetwaycomputer.com**

